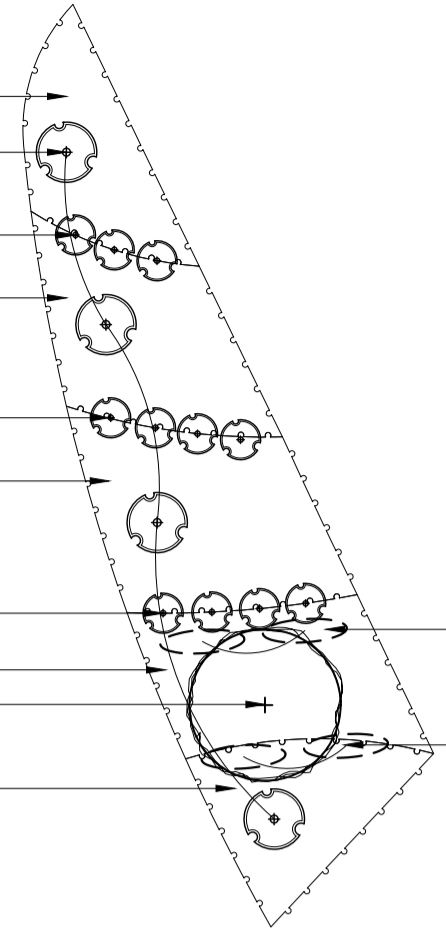


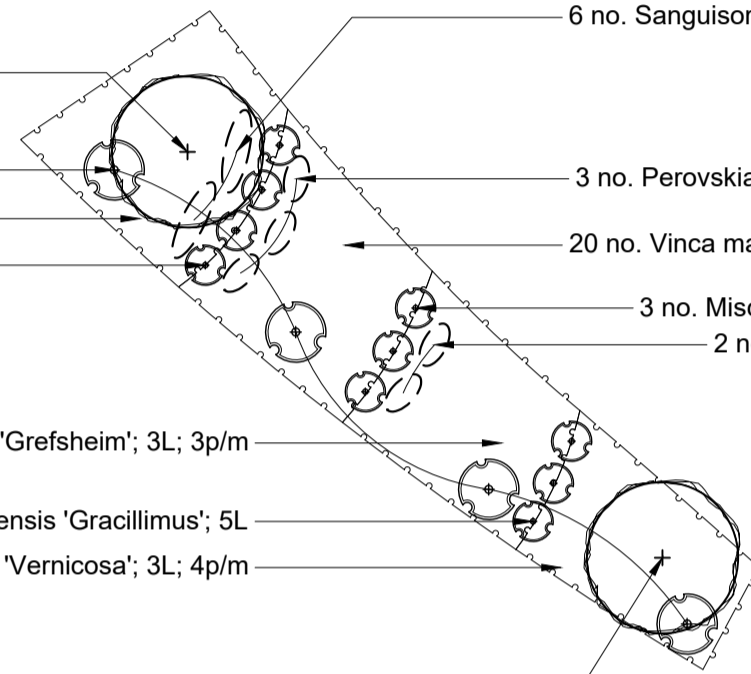
Planting Area No.01

- 12 no. Stephanandra incisa 'Crispa'; 3L; 4p/m
- 4 no. Phormium 'Cream Delight'; 10 ltr CG
- 3 no. Miscanthus sinensis 'Gracillimus'; 5L
- 16 no. Hebe 'Vernicosa'; 3L; 4p/m
- 4 no. Miscanthus sinensis 'Gracillimus'; 5L
- 18 no. Spiraea cinerea 'Grefsheim'; 3L; 3p/m
- 4 no. Miscanthus sinensis 'Gracillimus'; 5L
- 20 no. Vinca major 'Elegantissima'; 2L; 5p/m
- 1 no. Pyrus callyrana 'Chanticleer'
14-16cm girth; Standard Extra Heavy
- 15 no. Heuchera 'Plum Pudding'; 2L; 5p/m



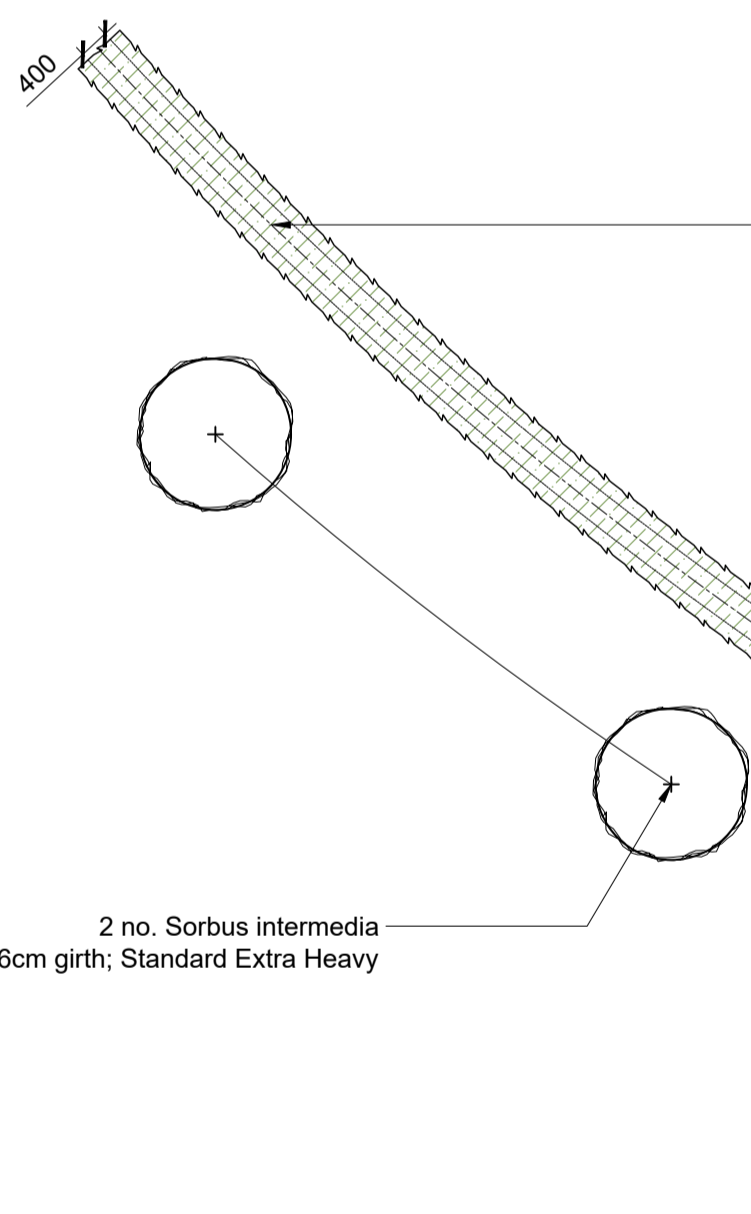
Planting Area No.02

- 1 no. Liriodendron tulipifera 'Aureomarginata'
14-16cm girth; Standard Extra Heavy
- 4 no. Phormium 'Cream Delight'; 10 ltr CG
- 15 no. Heuchera 'Plum Pudding'; 2L; 5p/m
- 4 no. Miscanthus sinensis 'Gracillimus'; 5L
- 6 no. Sanguisorba officinalis 'Red Thunder'; 2L
- 3 no. Perovskia atriplicifolia 'Blue Spire'; 2L
- 20 no. Vinca major 'Elegantissima'; 2L; 5p/m
- 3 no. Miscanthus sinensis 'Gracillimus'; 5L
- 2 no. Perovskia atriplicifolia 'Blue Spire'; 2L
- 15 no. Spiraea cinerea 'Grefsheim'; 3L; 3p/m
- 3 no. Miscanthus sinensis 'Gracillimus'; 5L
- 15 no. Hebe 'Vernicosa'; 3L; 4p/m



Planting Area No.03

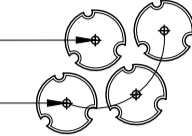
- 1 no. Liriodendron tulipifera 'Aureomarginata'
14-16cm girth; Standard Extra Heavy
- 2 no. Sorbus intermedia
14-16cm girth; Standard Extra Heavy



Mixed-species Native Hedgeline
60 no. Carpinus betulus;
60 no. Cornus sanguinea;
60 no. Corylus avellana;
60 - 80cm height; bare root stock;
2 no staggered rows set 400mm apart;
planted at 400mm centres.

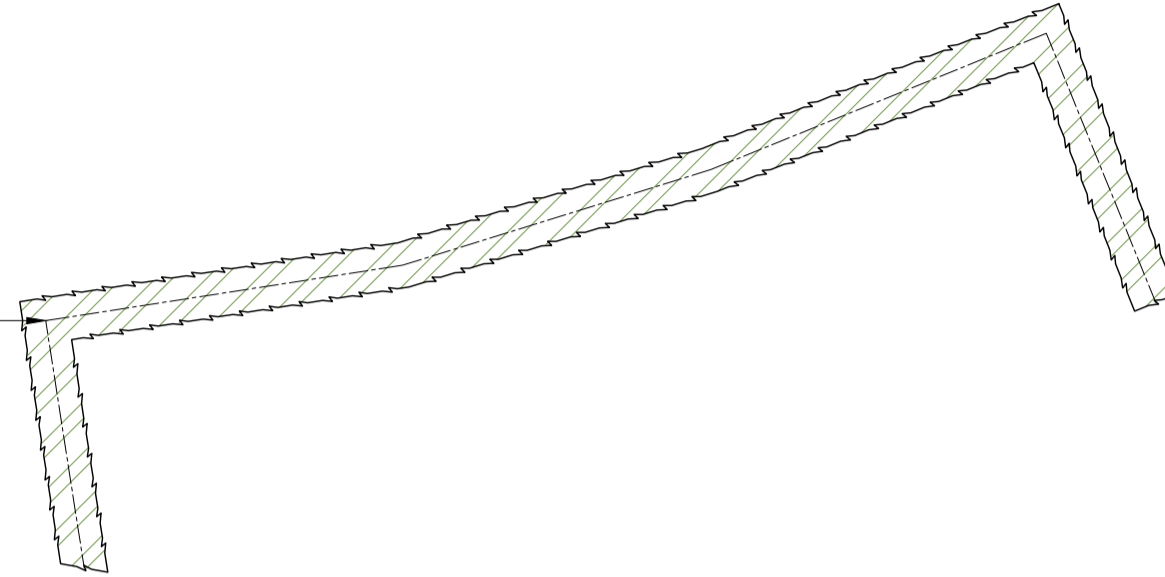
Planting Area No.06

- 1 no. Cotinus coggygria 'Royal Purple'; 10 ltr CG
- 3 no. Phormium 'Cream Delight'; 10 ltr CG



Planting Area No.07

Single Species Ornamental Hedgeline
70 no. Griselinia littoris;
60 - 80cm height; bare root stock;
single row; planted at 300mm centres.

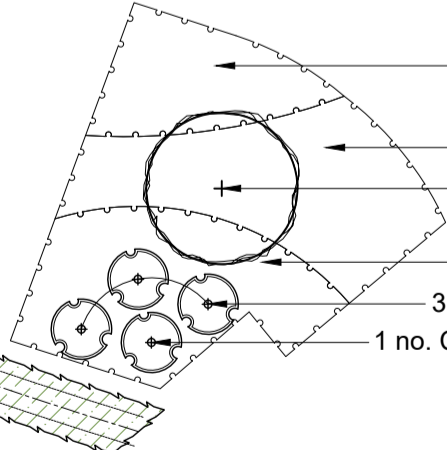


Planting Area No.05

- 12 no. Hebe 'Mrs Winder'; 3L; 4p/m
- 18 no. Hebe 'Vernicosa'; 3L; 4p/m
- 1 no. Phormium 'Cream Delight'; 10 ltr CG
- 1 no. Liriodendron tulipifera 'Aureomarginata'
14-16cm girth; Standard Extra Heavy
- 1 no. Phormium 'Cream Delight'; 10 ltr CG
- 1 no. Phormium 'Cream Delight'; 10 ltr CG
- 20 no. Pennisetum alopecuroides 'Hameln'; 1.5L; 4p/m
- 55 no. Lavandula angustifolia 'Hidcote'; 3L; 5p/m
- 1 no. Phormium 'Cream Delight'; 10 ltr CG
- 70 no. Vinca major 'Elegantissima'; 2L; 5p/m
- 16 no. Anemathele lessoniana; 2L
- 8 no. Sanguisorba officinalis 'Red Thunder'; 2L
(Ratio 2:1 repeated)
- 15 no. Rudbeckia fulgida var. sullivantii 'Goldsturm'; 2L
- 30 no. Hebe 'Vernicosa'; 3L; 4p/m
- 5 no. Vinca major 'Elegantissima'; 2L; 5p/m
- 3 no. Choisya 'Aztec Pearl'; 10 ltr
- 1 no. Betula pendula
14-16cm girth; Standard Extra Heavy
- 21 no. Spiraea cinerea 'Grefsheim'; 3L; 3p/m
- 18 no. Prunus laurocerasus 'Mount Vernon'; 3L; 3p/m

Planting Area No.04

- 12 no. Dierama 'Miranda'; 1.5L; 4 p/m
- 24 no. Pennisetum alopecuroides 'Hameln'; 1.5L; 4p/m
- 1 no. Betula pendula
14-16cm girth; Standard Extra Heavy
- 15 no. Hebe 'Vernicosa'; 3L; 4p/m
- 3 no. Miscanthus sinensis 'Gracillimus'; 5L
- 1 no. Choisya 'Aztec Pearl'; 10 ltr



- Feature Tree Planting**
2 no. Betula pendula
3 no. Liriodendron tulipifera 'Aureomarginata'
1 no. Pyrus callyrana 'Chanticleer'
2 no. Sorbus intermedia
Standard Extra Heavy; 14-16cm girth; 4.25 - 6.0m height
- Native Mixed Species Hedge Planting**
60 no. Carpinus betulus
60 no. Cornus sanguinea
60 no. Corylus avellana
60 - 80cm height; bare root stock;
2 no. staggered rows set 400mm apart;
planted at 400mm centres;
- Single Species Ornamental Hedgeline**
70 no. Griselinia littoris;
60 - 80cm height; bare root stock;
single row; planted at 300mm centres.
- Flowering Shrub / Groundcover Planting**
12 no. Dierama 'Miranda'; 1.5L; 4 p/m
94 no. Hebe 'Vernicosa'; 3L; 4p/m
12 no. Hebe 'Mrs Winder'; 3L; 4p/m
30 no. Heuchera 'Plum Pudding'; 2L; 5p/m
55 no. Lavandula angustifolia 'Hidcote'; 3L; 5p/m
44 no. Pennisetum alopecuroides 'Hameln'; 1.5L; 4p/m
18 no. Prunus laurocerasus 'Mount Vernon'; 3L; 3p/m
54 no. Spiraea cinerea 'Grefsheim'; 3L; 3p/m
18 no. Stephanandra incisa 'Crispa'; 3L; 4p/m
115 no. Vinca major 'Elegantissima'; 2L; 5p/m
- Specimen Planting**
4 no. Choisya 'Aztec Pearl'; 10L
1 no. Cotinus coggygria 'Royal Purple'; 10L
24 no. Miscanthus sinensis 'Gracillimus'; 5L
15 no. Phormium 'Cream Delight'; 10L
- Accent Planting**
16 no. Anemathele lessoniana; 2L
5 no. Perovskia atriplicifolia 'Blue Spire'; 2L
15 no. Rudbeckia fulgida var. sullivantii 'Goldsturm'; 2L
26 no. Sanguisorba officinalis 'Red Thunder'; 2L

Legend

- Proposed - Feature Trees**
14 - 16cm girth size; 4.25 - 6.0m height;
Standard Extra Heavy
- Proposed - Native Mixed Species Hedgeline**
60 - 80cm height; bare root stock;
2 no staggered rows set 400mm apart;
planted at 400mm centres.
- Proposed - Ornamental Hedgeline**
60 - 80cm height; bare root stock;
single row; planted at 300mm centres.
- Proposed - Feature Planting Areas**
Proposed groundcover shrub planting areas with
specimen and accent planting
- Proposed - Specimen Planting**
Proposed specimen shrub / feature planting
- Proposed - Accent Planting**
Proposed (bulb / perennial) accent planting

Notes:

Planting Topsoil Specification:
Planting Areas to be minimum 300mm depth subsoil
overlay with a minimum depth of Multi-purpose Topsoil to
BS 3882: 2015;
Grass Seeded / Turf areas: min. depth 150 mm topsoil;
Shrub Planting Areas: min. depth 300mm topsoil;
Tree Planting areas: min. depth 600mm topsoil.

Topsoil to be tested and certified by a Soil Scientist in
accordance with imported topsoil specification.

Mulching:

All planting areas to be mulched with 75mm of FSC
Ornamental Bark Mulch.

Tree Staking:

Extra Heavy Standard trees to be secured by 'deadweight'
underground guying of rootball.
Select Standard trees to be secured by single long driven
staking.

Refer to the following documentation:
LLD1287-LAN-REP-001 - Ecological Design Strategy and
Landscape Management Plan.
LLD1287-LAN-DWG-100 - Soft Landscape Layout.
LLD1287-LAN-DWG-200series for Detailed Planting
Plans.
LLD1287-LAN-SCH-001 - Detailed Plant Schedule and
Specification.

Site Operations:
(Refer to the following guidance)
BS 4428:1989 Code of practice for general landscape
operations (excluding hard surfaces);
BS 8545:2014 Trees: from nursery to independence in the
landscape - Recommendations.

PLANNING ISSUE

| Rev | Description | Date | Initials |
|-----|----------------|----------|----------|
| 01 | Planning Issue | 13.12.17 | KM |
| 00 | Draft Issue | 05.12.17 | KM |



The Old Bank, 34 South Street, Tarring, Worthing, West Sussex, BN14 7LH
T 01903 216033 E lizardlandscape@icommact.com W lizardlandscapeecology.com

Client
East Sussex County Council
Project Title and Location
Proposed Sports Hall Car Park
Willington Community School Eastbourne

Drawing Title
Detailed Planting Plan

Scale
1:100@A1

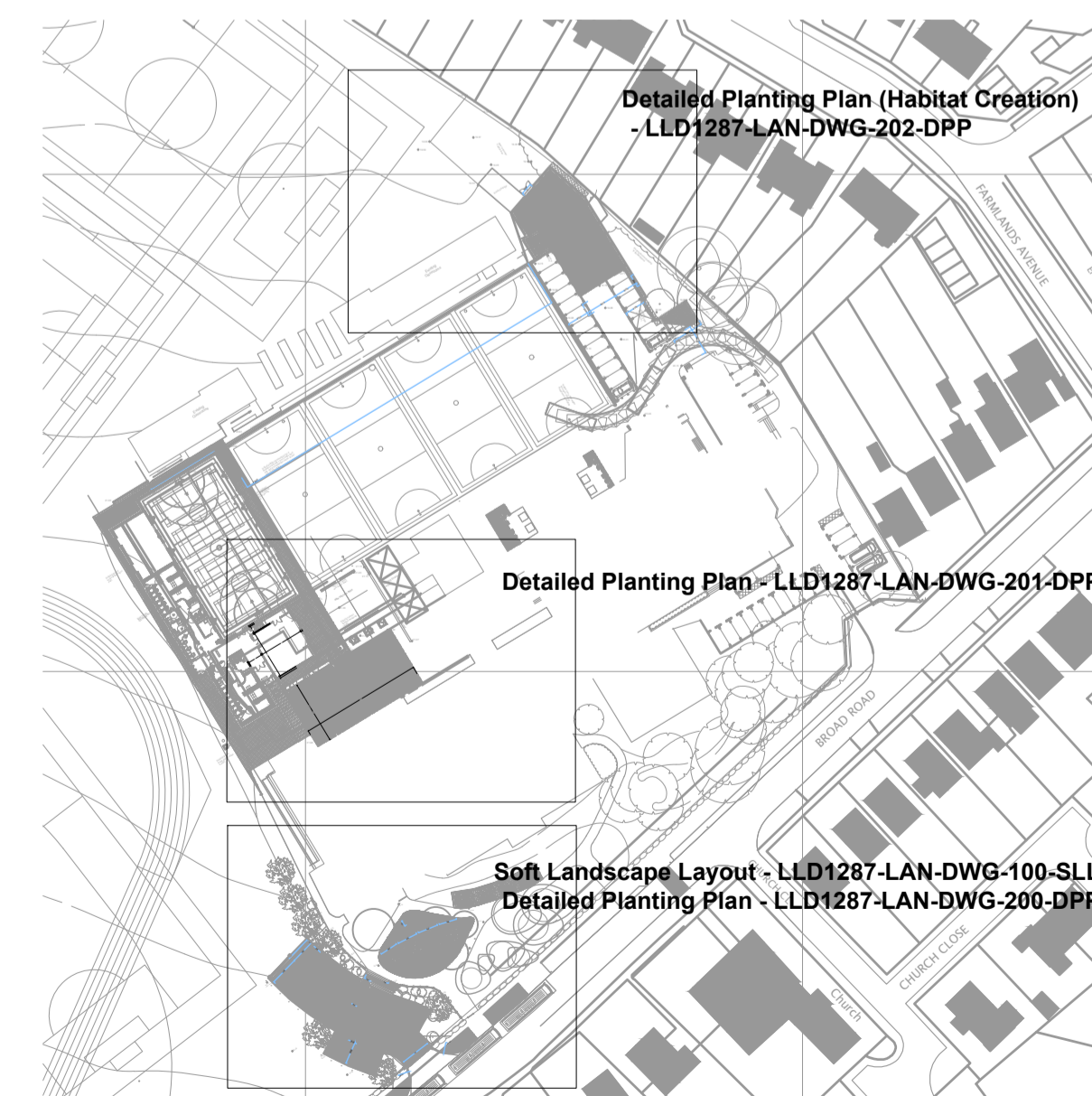
Drawn
KM

Approved
JJ

Date
05.12.2017

Drawing No
LLD1287-LAN-DWG-200

Revision
01



Proposed Sports Hall Car Park - Detailed Planting Plan
Willington Community School, Broad Road, Eastbourne

